

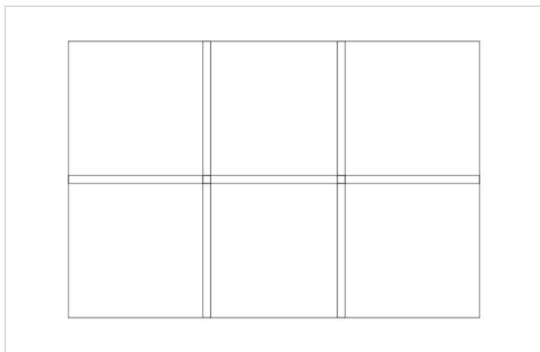
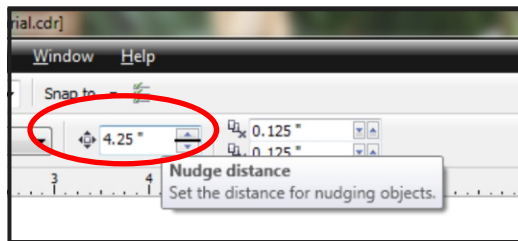


# Creating Tiled Murals in CorelDraw®

In order to make a tiled mural, first make a template for the tiles. We will use the 4.25" x 4.25" tile for this tutorial.

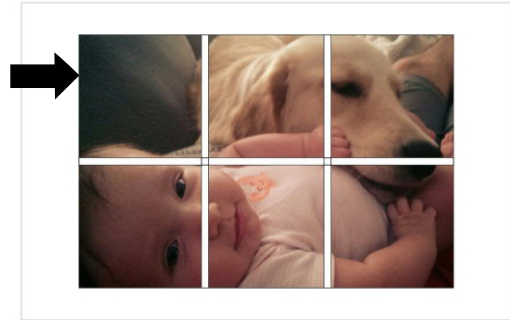
Use the Rectangle Tool (F6) to make a box that is 4.5" x 4.5".

Set the Nudge to 4.25" inches (or the size of the tile being used). Copy (Ctrl+C) and Paste (Ctrl+V) the first box. Then using the arrow key, move the pasted box over once. Repeat until the first row is complete. Select the entire row and copy and paste then arrow down once. Repeat until grid is complete.

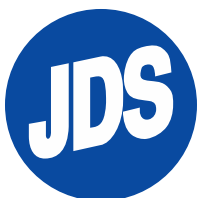
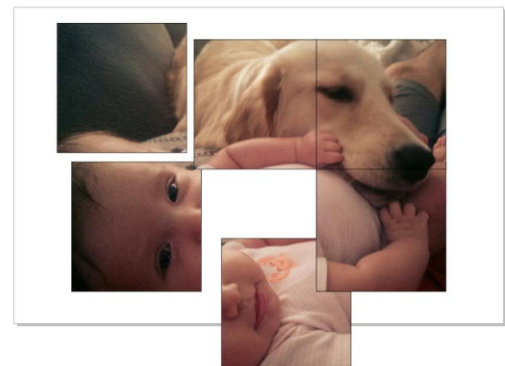
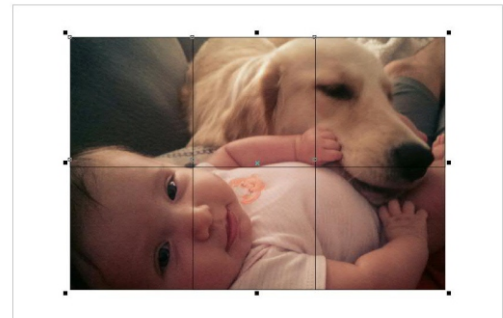


Combine the grid (Ctrl+L) Then import your photo or artwork. Place the photo behind the grid and center your artwork in the grid.

Select only the artwork and PowerClip the art inside the grid (Object or Effects/PowerClip/Place Inside Frame).



After PowerClipping the artwork, break the pieces apart (Ctrl+K) and print each tile.



**JDS Industries**

1-800-843-8853  
jdsindustries.com

youtube.com/user/JDSINDUSTRIES  
sublimation@jdsindustries.com