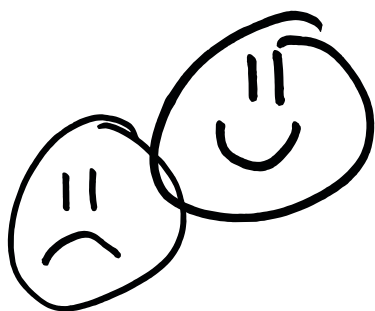


# Getting Creative with Corel

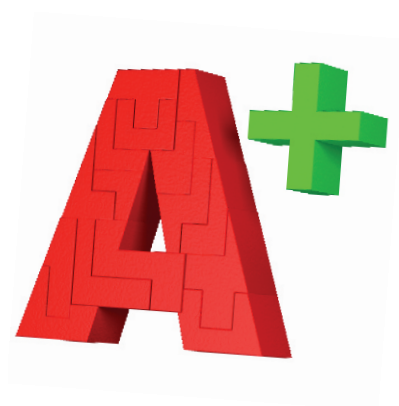
## Turning Bad Art Into Exceptional Art

*Presented by: Shon Roti*

[shonr@jdsindustries.com](mailto:shonr@jdsindustries.com)



### Discussion topics:



#### **Embellishing an Award Plaque**

Line, Smart Fill, Transparency Tool. Adjust photo, crop photo

#### **State Shape Award**

Contour Tool, Outline Trace, Clone Tool, Transparency, Trim Tool, Eyedropper Tool, Clipping (in Photo-Paint), Powerclipping and Cutout Lab

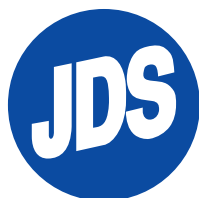
#### **Creating a “watermark” to protect your artwork**

Use a simple property tool Photo-Paint to create semi-opaque versions of rastered artwork to be used as a watermark.

#### **The Twirl Tool**

A quick tutorial of the Twirl Tool - a fun and mostly impractical tool.

Q&A



**JDS Industries**

1-800-843-8853  
[jdsindustries.com](http://jdsindustries.com)

[youtube.com/user/JDSINDUSTRIES](https://www.youtube.com/user/JDSINDUSTRIES)  
[sublimation@jdsindustries.com](mailto:sublimation@jdsindustries.com)



# Embellishing an Award Plaque

## Line, Smart Fill, Transparency Tool

Creating an award using photos, logos, text and graphics is 90% of what we do when we are creating a sublimated plaque. As illustrated below, using a few simple tools can take a lack luster project to something more interesting.

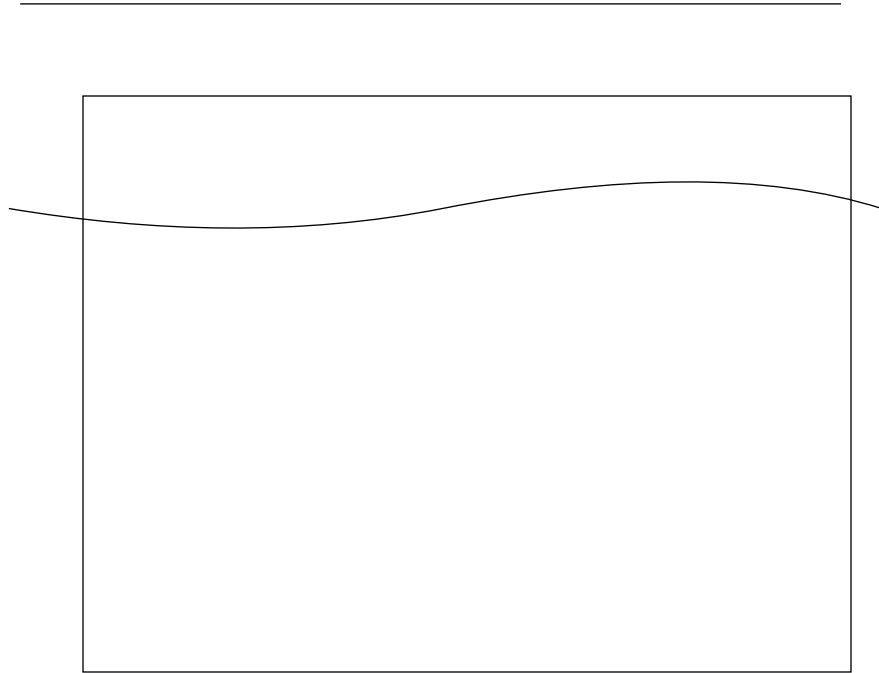
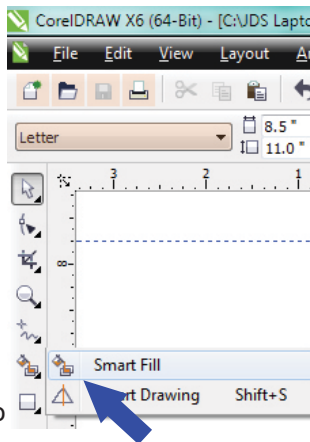
### Line tool, Smart Fill

1. Create a rectangle and size it to fit your plaque and change it to curves (Ctrl + Q).

2. Create a line [F5] slightly larger than the rectangle and add node using the Node tool [F10].

3. Arrange the line over the box where desired and use the Smart Fill to create edges for the plate.

4. Use the Eyedropper tool to match colors of the logo or photo for the new graphics.

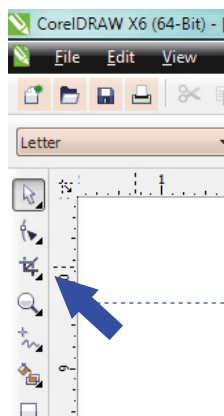


### Adjust photo, crop photo

1. Copy and Paste (Ctrl C & Ctrl V) the photo and open the photo in Photo-Paint.

2. Adjust by lightening the image as needed. Save.

3. Crop the new photo to make a backdrop for the text.





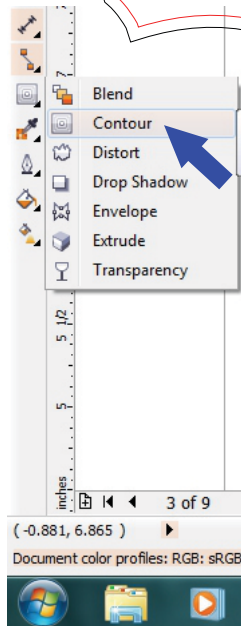
# STATE SHAPE AWARD

## Contour tool, Outline tool, Transparency, Clone tool, Clipping

Blending different graphics, text and photos into a single image can require multiple tools with both CorelDraw and Corel Photo-Paint.

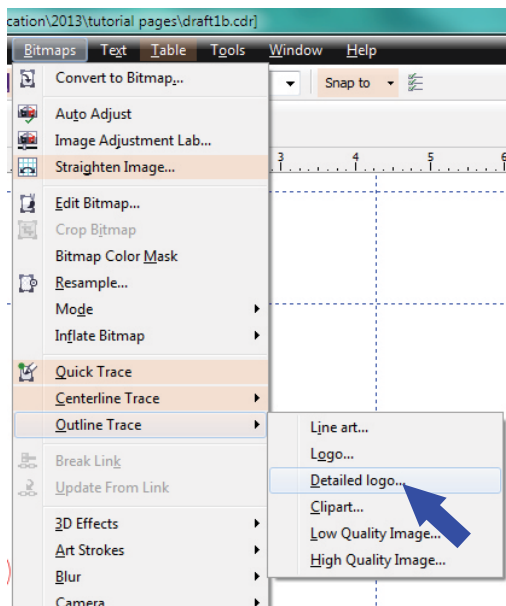
### Contour Tool

1. Import all photos and graphics associated with the project.
2. Create a state shape or download a template for one.
3. Use the contour tool to create a proportional boarder 1/16 bigger than the original state shape - this is your bleed edge.
4. Break the lines apart (Ctrl + K).
5. Layout graphic and text as desired.



### Outline Trace

1. Select the raster image needed to change to vector.
2. Go to Bitmap > Outline Trace > Detailed Logo.
3. Use the adjustment sliders to get the desired results.



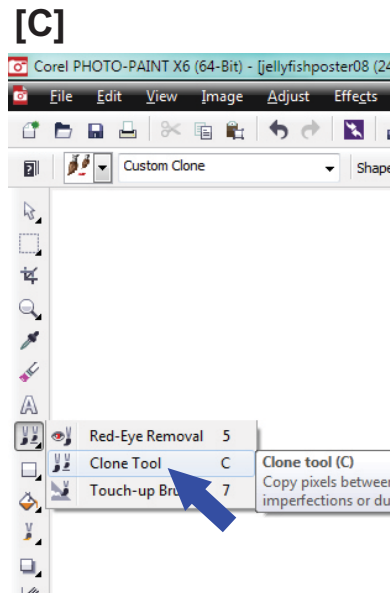
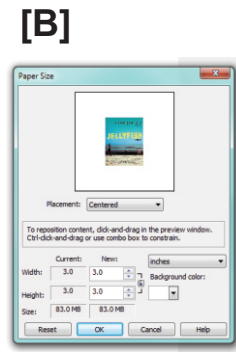
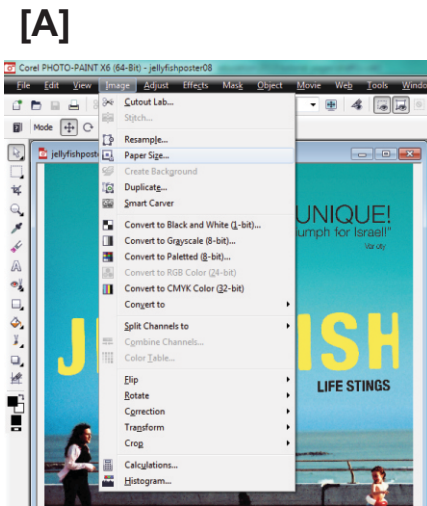
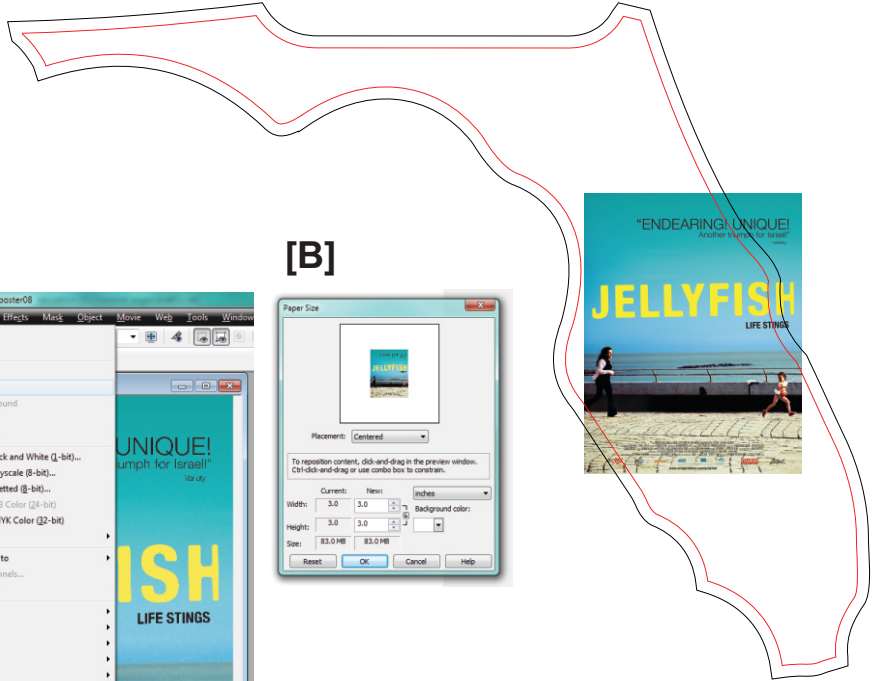


# STATE SHAPE AWARD

[Continued]

## Clone Tool

1. Align, resize the photo for your template.
2. With the photo selected, go to Bitmap > Edit Bitmap. Photo-Paint will open.
3. Add more margin to the image, go to Image > Paper Size [A, B].
4. Use the Clone tool to expand portions of the photograph to fit your template and remove unwanted elements [C].
5. Copy and Paste New to Clipboard. Save As a Corel Photo-Paint file (cpt). Import this new file into CorelDraw.





# STATE SHAPE AWARD

[Continued]

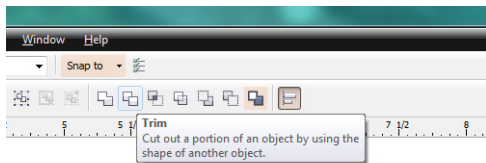
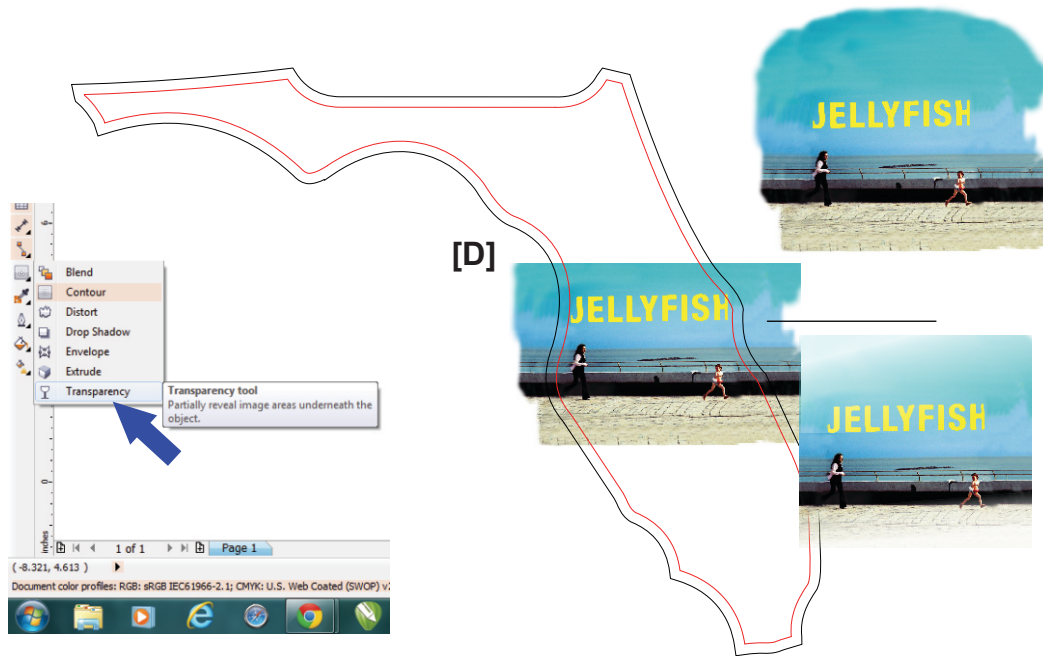
## Transparency, Trim Tool or Smart Fill

1. Align the new cloned art into the template and crop.

2. Copy the image and crop into two pieces separated in the middle [D].

3. Use the Transparency tool to fade the images on the top and the bottom.

4. Cut the template in half near the middle of the two images. Copy the template, create a rectangle around the top half and use the Trim Tool to cut [E]. Paste the template and repeat this step for the other half. Florida should now be in two pieces [F]. The Smart Tool can also be used for this application.



[F]



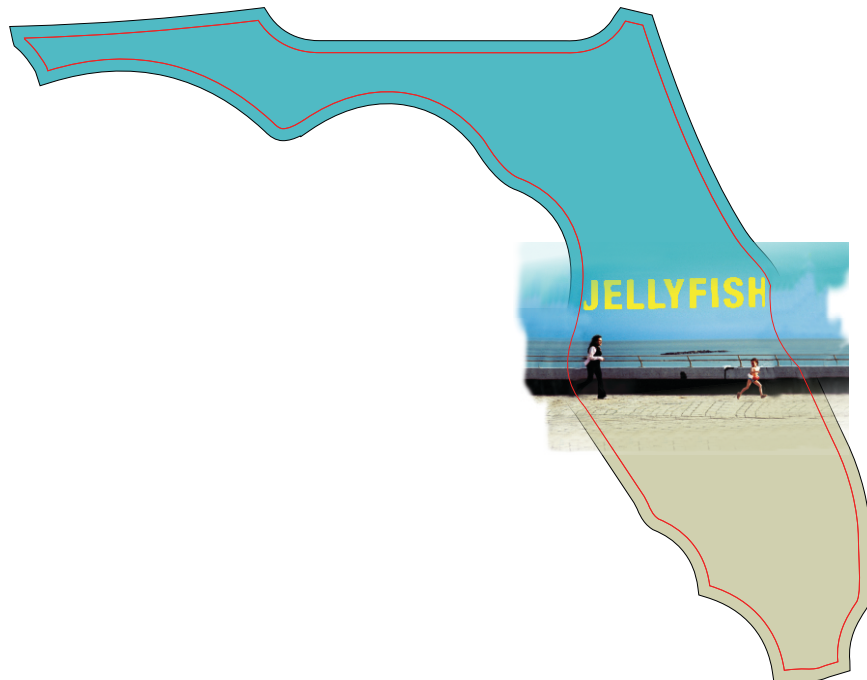
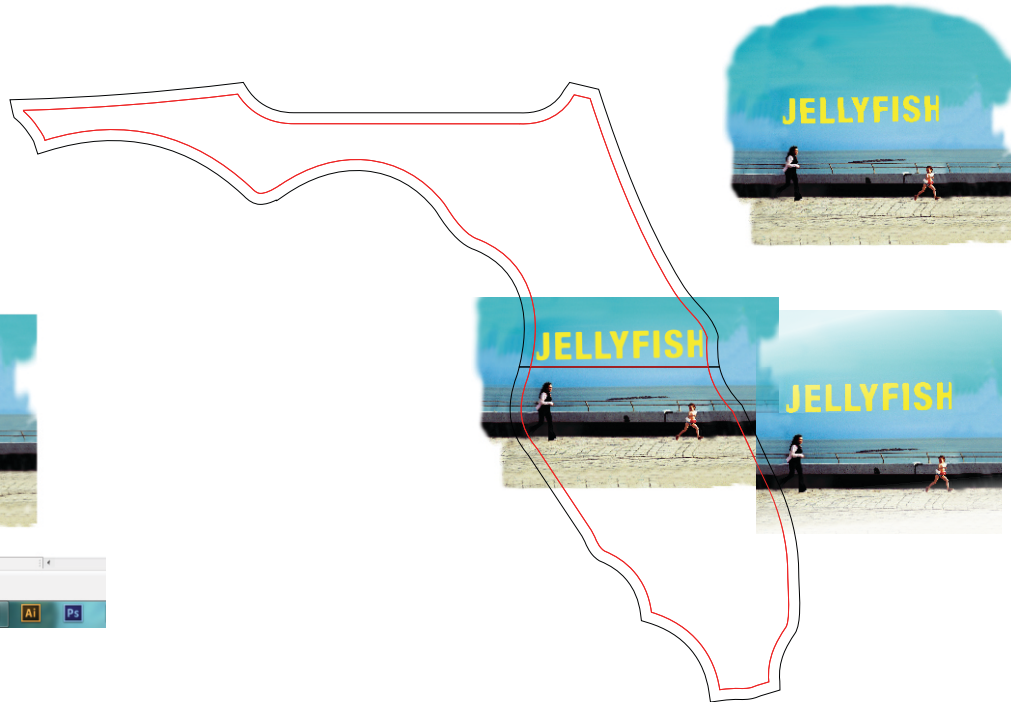
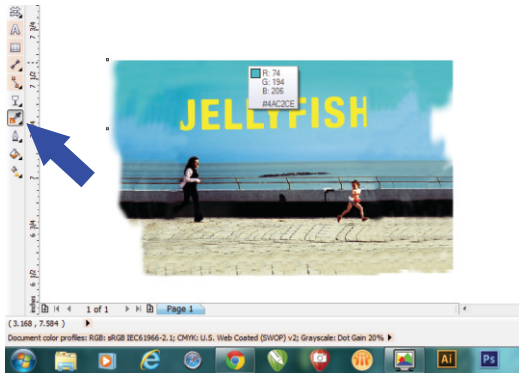


# STATE SHAPE AWARD

[Continued]

## Eyedropper Tool

1. Hover the Eyedropper tool over the top and bottom half of the images and change the template in to the two colors.



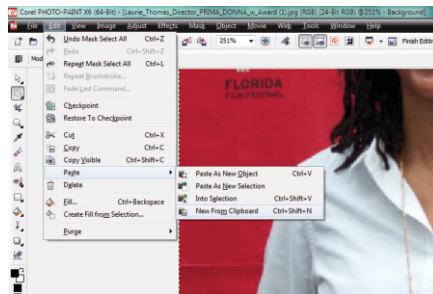


# STATE SHAPE AWARD

## [Continued]

### Clipping (in Photo-Paint)

1. Open the image in Photo-Paint.
2. Select All (Ctrl + A), Copy and Paste New from Clipboard. The new document will have a transparent background by default.

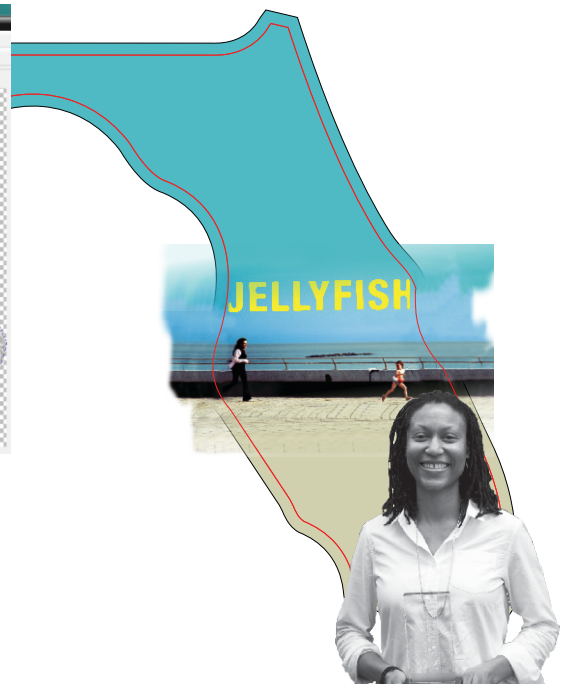
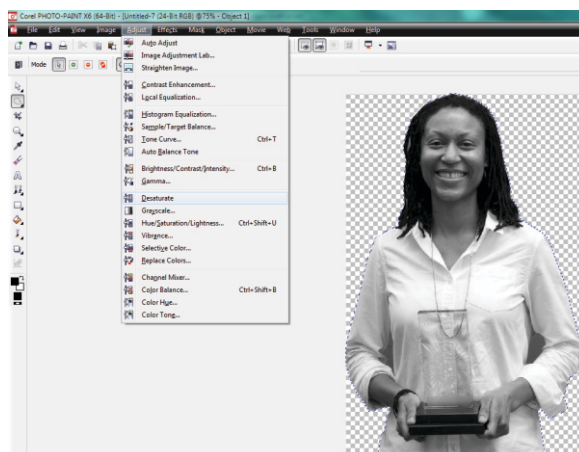


3. Use one or more of the various selection tools to select the person in the image. Select the inverse and delete.



4. To desaturate to grayscale, go to Adjust > Desaturate. Save as a Photo-Paint file (cpt).

5. Import the image into CorelDraw and place into layout.





# STATE SHAPE AWARD

## [Continued]

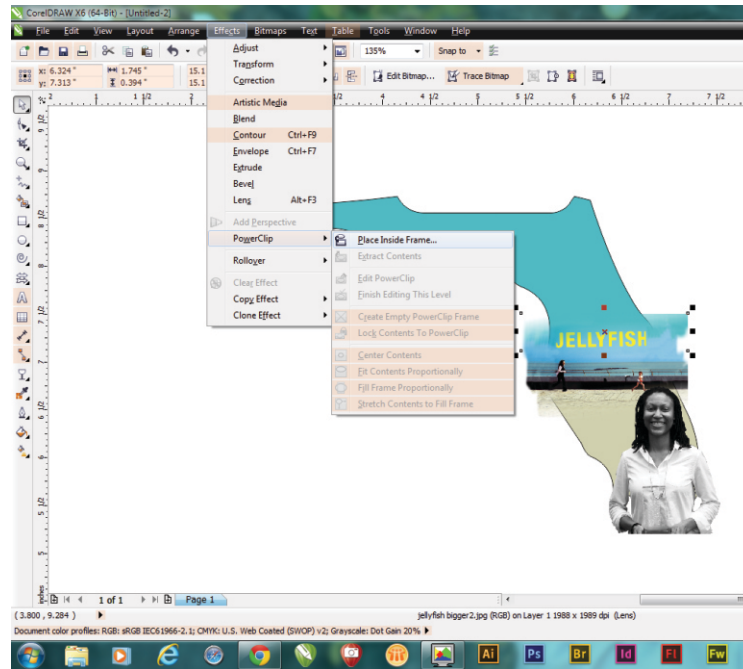
### PowerClipping

1. Delete the internal template (red line).

2. With various images selected, go to Effects > PowerClip > Place Inside Frame/Container and click on the top or bottom have of the template (black line). The elements should now be masked inside the template.

3. Remove the black outline from both the top and bottom half of the template. With the image selected, right-click the "X" at the top of the color palette.

4. Place the other graphic elements and text into the layout.



*St. Augustine*



Laurie Thomas  
[director]







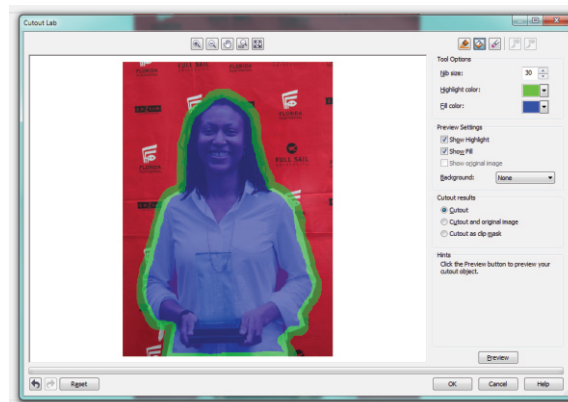
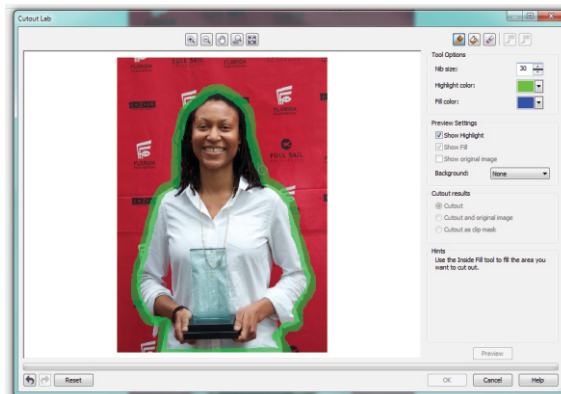
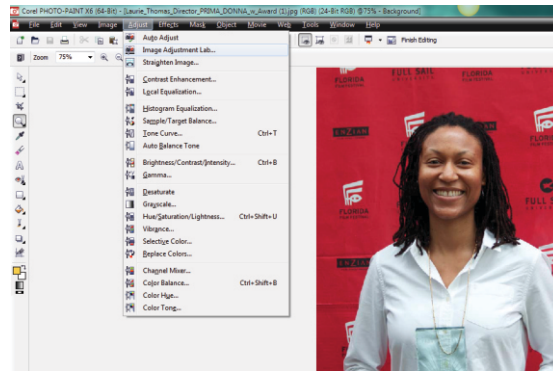
# CUTOUT LAB

1. Open the image into Photo-Paint.
2. Go to Image > Cutout Lab.
3. Select the Highlight Tool and change the Nib size (brush thickness) to a workable size, drag the Highlight tool around the edges. Try to keep the brush half in the background and half inside the subject.
4. Select the Inside Fill Tool (paint bucket) and click inside the highlighted area. The masking is revealed by selecting the Preview button at the bottom of the window. The background will be replaced with a checkered background.

Note: Within this Preview mode, changes can be made to include or further remove areas using either the Add Detail or Remove Detail tools.

2nd Note: Adjust the Nib size down for small detail areas. Click OK when you are satisfied with the masking, and the image will drop back into Photo-Paint with the background removed from the image.

Save the image as a Photo-Paint file to preserve the transparency.





# CREATING A “WATERMARK”

## An Anti-Theft Security Measure

This technique helps to prevent artwork submitted for approval from getting reproduced without your permission. Originally, watermarks were created with a water-coated metal stamp during the manufacturing process of paper to protect against counterfeiting.

1. Change the business log to a raster image.

2. With the graphic selected, go to Bitmaps > Convert to Bitmap. Make sure that the transparency option is selected [A].

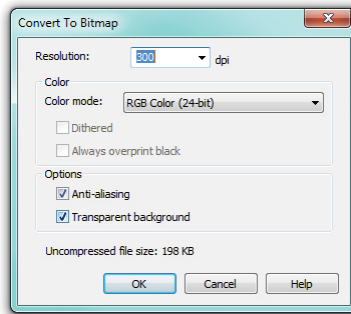
3. With the graphic selected, go to Bitmaps > Edit Bitmap. Corel Photo-Paint will open.

4. With the Pick tool selected, right click in the image and select Properties.

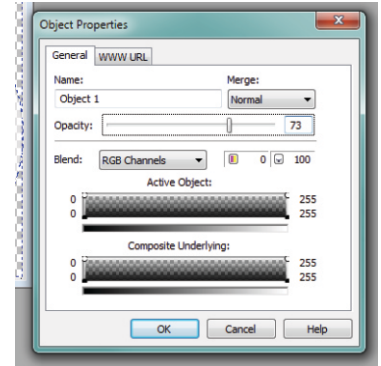
5. Adjust the Opacity slider to the desired effect. Then Save and close Corel Photo-Paint.

6. Place the new water mark that you have created in the artwork. Select all the artwork, go to Bitmaps > Convert to Bitmap (choose the desired DPI).

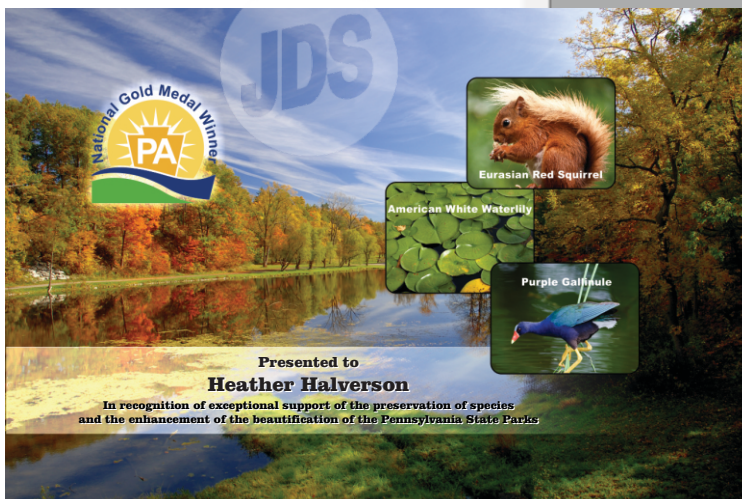
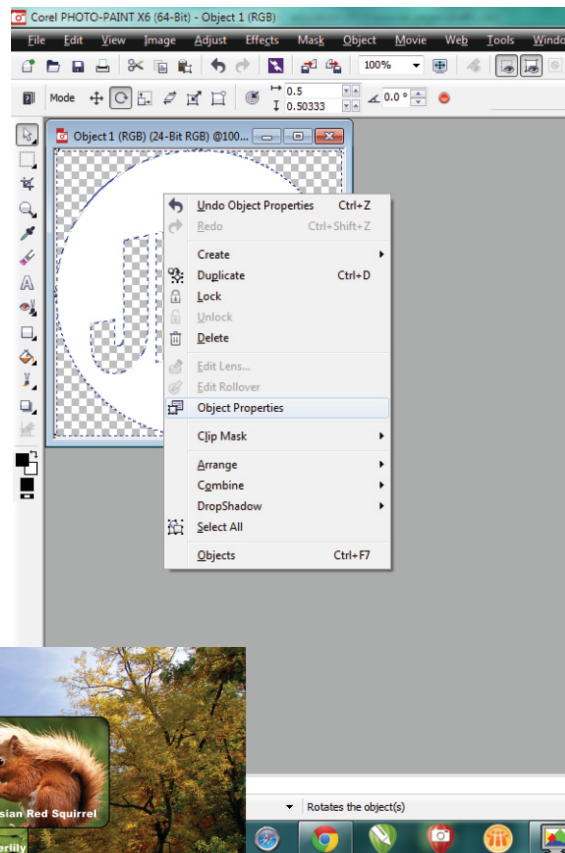
[A]



[C]



[B]





# Proof Page

[Incorporating the water-marked art]

**Your Business  
Name/Logo Here**

Service Contact: \_\_\_\_\_

FAXED Attn: \_\_\_\_\_

EMAILED Email/Fax: \_\_\_\_\_

Date Sent: \_\_\_\_\_

**Please review ALL of the submitted information for accuracy, then sign, FAX or email to (Business) at: 555-555-5555 or XYZ@ABC.com**

## Pre-Production Art Submitted for Approval

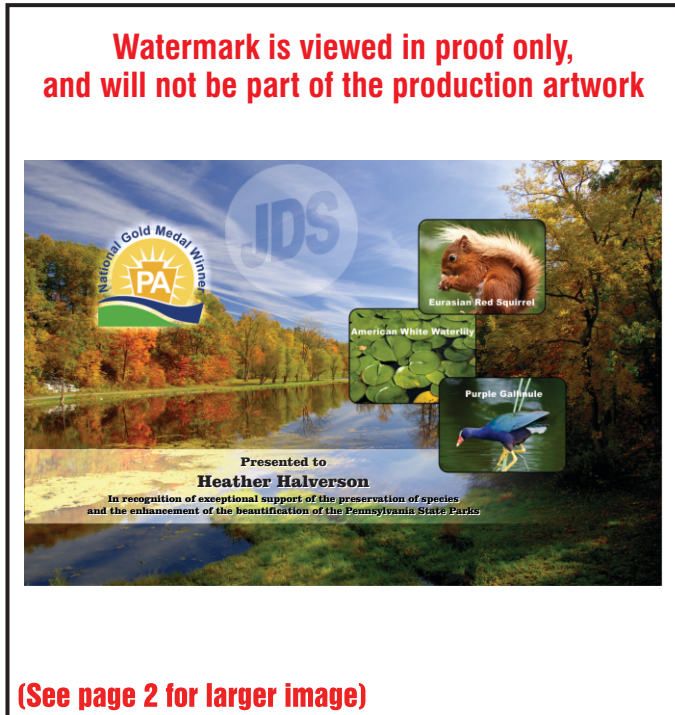
This art has been submitted for your approval. Please note that your order will not enter into our production schedule until this form has been returned with written approval to begin production. Please review the attached art and respond as necessary. The watermark will appear only on the proof page.

Note: Colors on monitors will vary. It is normal to expect color production differences from images viewed on a monitor.

**(See page 2 for larger image)**

Order#: \_\_\_\_\_  
 Customer#: \_\_\_\_\_  
 Prepared By: \_\_\_\_\_  
 Production Process: \_\_\_\_\_  
 Finished Size: \_\_\_\_\_  
 Imprint Color: \_\_\_\_\_  
 Substrate: \_\_\_\_\_  
 Substrate Colors: \_\_\_\_\_  
 Quantity: \_\_\_\_\_  
 Line Changes: \_\_\_\_\_  
 Other: \_\_\_\_\_

**NOTE:** The finished product may vary slightly from the proof supplied. Actual color, fine detail and overall definition are determined by the production process. If a production sample is required, please indicate below and return this form.



Provide Production Sample

Approved Proceed with order.

Make Changes As Noted Proceed with order.

Make Changes As Noted Re-Submit Art for Approval.

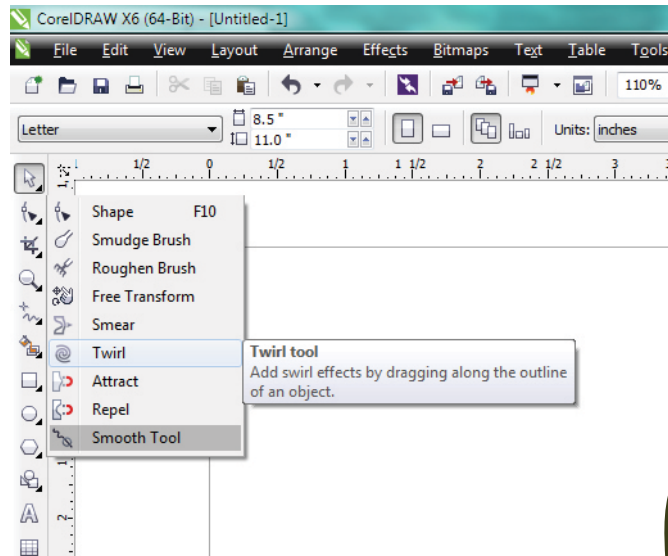
Date Returned: \_\_\_\_\_

Customer Signature: \_\_\_\_\_



# The Twirl Tool

1. Click on the vector graphic.
2. Select the Twirl Tool and click in the area of the vector graphic. Hold the left mouse button down until the results are achieved.
3. Use the adjustments in the Property Bar for twirl direction and nib size and speed of twirl.



*Hope you enjoyed the class!*



**JDS Industries**

1-800-843-8853  
jdsindustries.com

youtube.com/user/JDSINDUSTRIES  
sublimation@jdsindustries.com