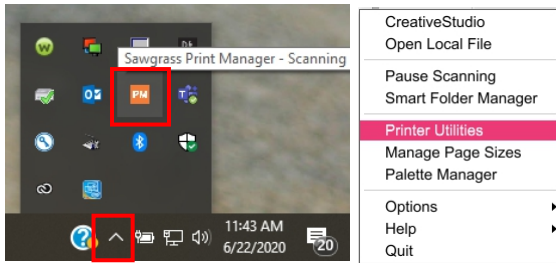


# Sawgrass Printer Installation Guide

This installation guide will provide the step-by-step instructions for installing a Sawgrass printer onto a Windows computer connecting via Ethernet cable.

**Note:** If the Sawgrass Print Manager is already installed and running, go to the System Tray and click on the Print Manager icon and select Printer Utilities. Select Add A New Printer in the Utilities screen then skip to Step 14.



1. Go ahead and load the ink into the printer and turn the printer on. It will take about 7 minutes for the ink to load. Connect the Ethernet cable to the printer and router at this time. Proceed to step 2.



2. Obtain the IP address from the printer.

2a. On the printer, press the Menu button then press the down arrow to System Settings. Press OK.



Use These Arrow Buttons

2b. Push the down arrow button to Interface Settings. Press OK.



2c. With the Network option highlighted press OK.



# Sawgrass Printer Installation Guide

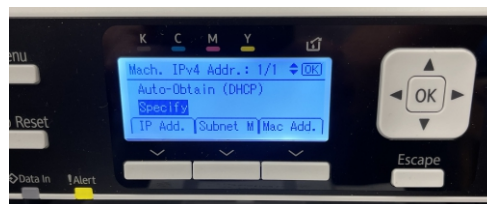
2d. With Machine IPv4 Address highlighted, Press OK.



2e. Select Auto-Obtain (DHCP) then push the button located beneath IP Add. Write that number on a slip of paper (it will be needed during installation). Press the Escape button multiple times until back to the beginning.



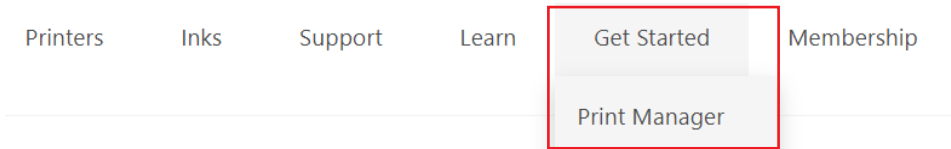
2f. If you want to assign a specific IP address select Specify then Push the button located beneath IP Add. Use the arrow buttons to enter the address. When the last number is entered press OK then push Escape multiple times until back to the beginning screen.



# Sawgrass Printer Installation Guide

3. Go to [www.sawgrassink.com](http://www.sawgrassink.com) and create a login and password

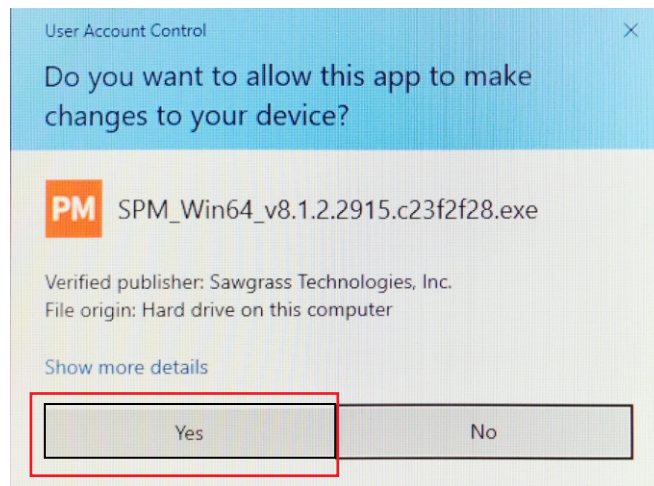
4. Once logged in go to Get Started and select Print Manager.



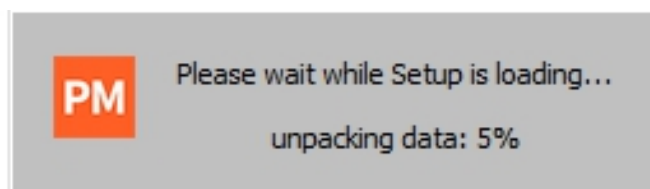
5. At the bottom of the screen click Download for Windows. This will begin the download.



6. Locate the downloaded file and run it. Click Yes on the User Account Control screen.

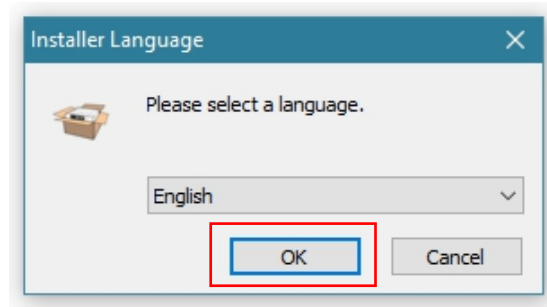


7. The Setup will now load. This can take a bit of time.

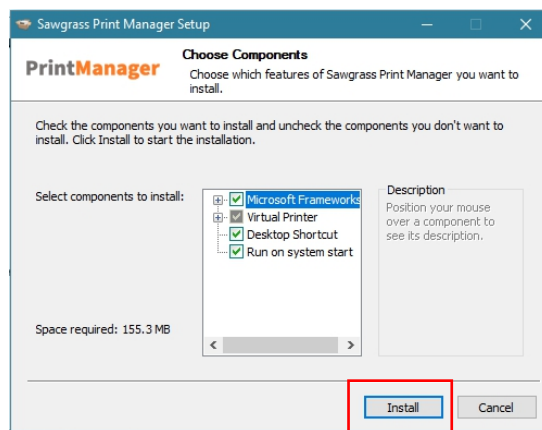


# Sawgrass Printer Installation Guide

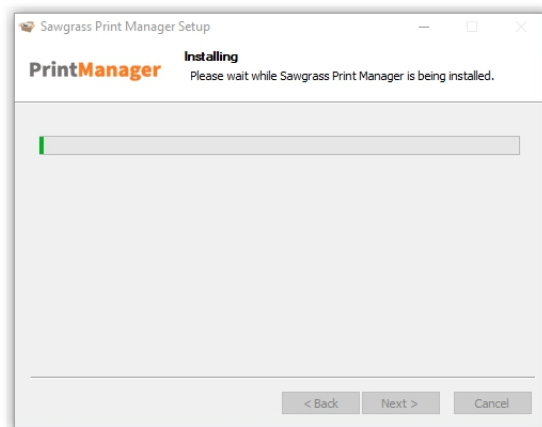
8. Select the language you will be using then click OK.



9. Click Install on the Choose Components screen (do not change any of the checkboxes).

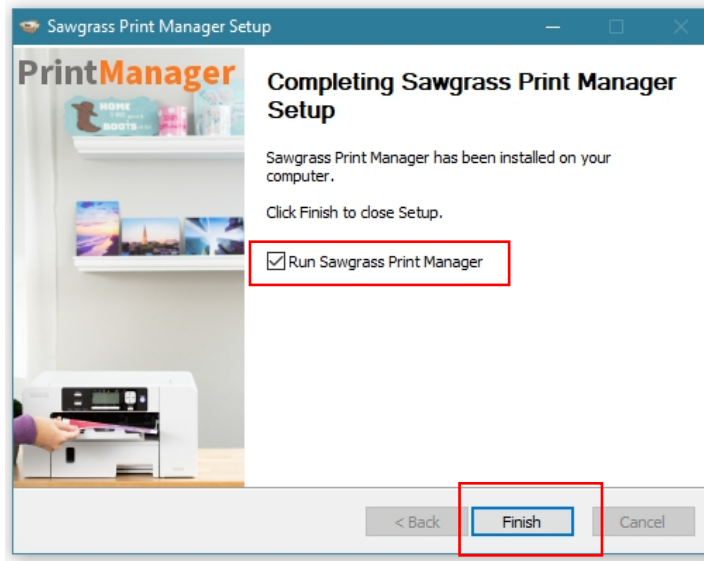


10. The installation process will begin. Allow the process to complete. This step will take a bit of time.

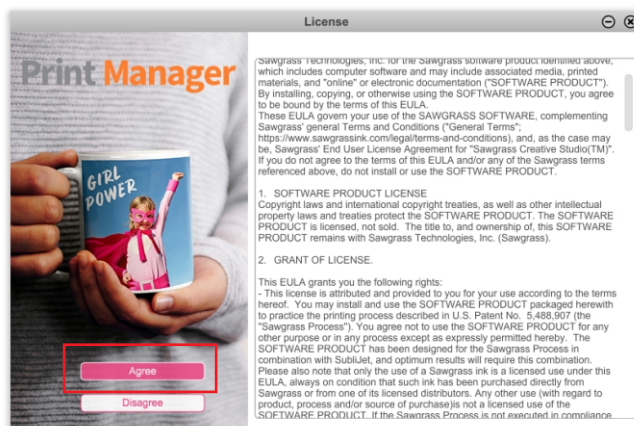


# Sawgrass Printer Installation Guide

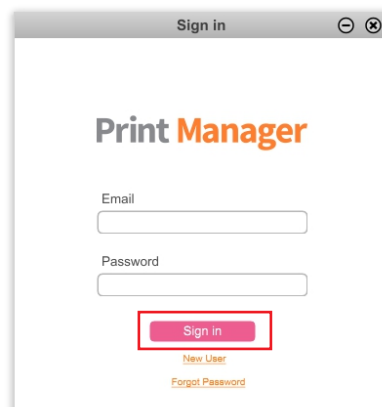
11. Once the installation is complete select “Run Sawgrass Print Manager” then click Finish.



12. The Print Manager will automatically start up. When the license agreement screen pops up click I Agree.



13. Enter the Sawgrass login credentials that were previously created. Click Sign In.

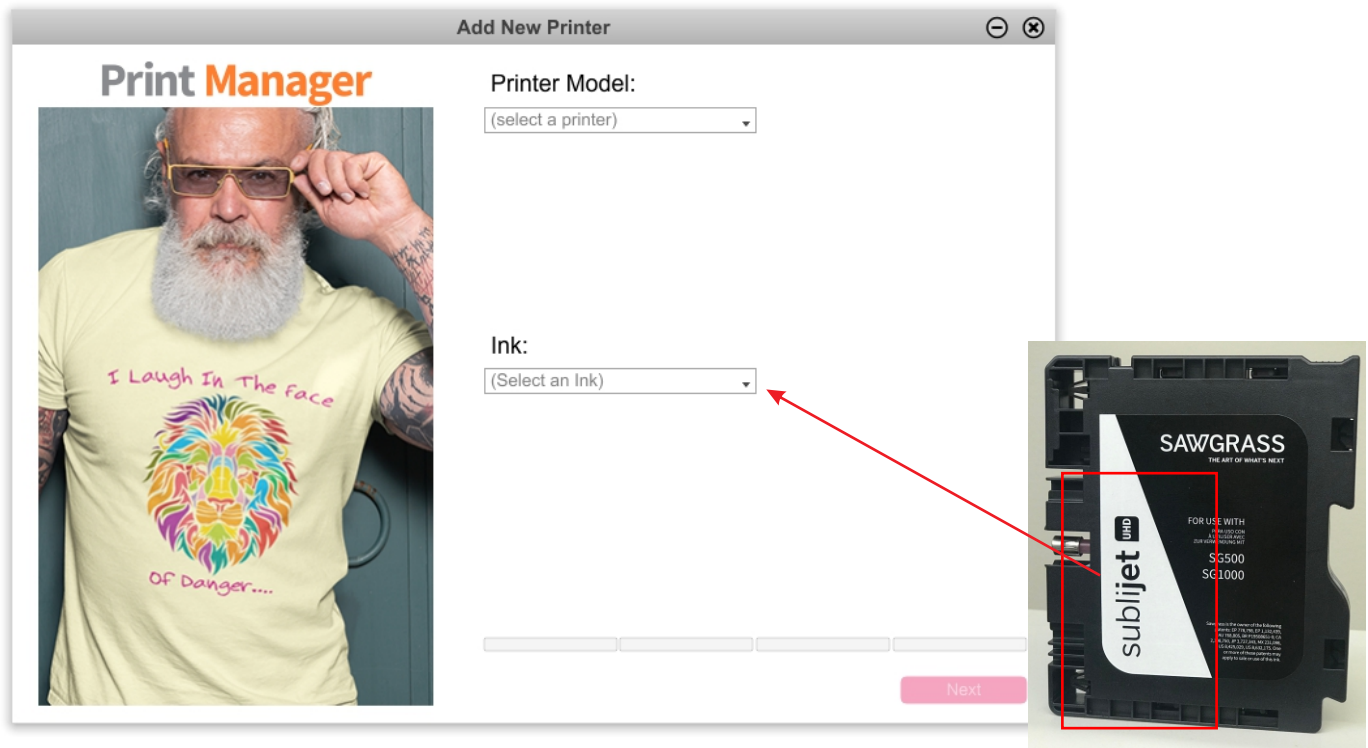


# Sawgrass Printer Installation Guide

14. When the Printers window appears, select Setup New Printer.

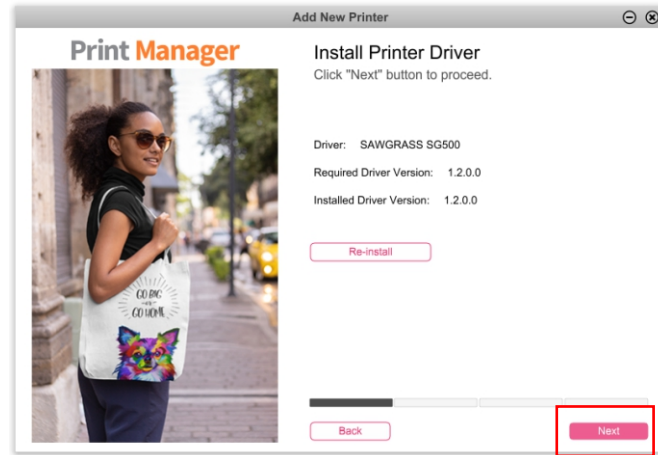


15. Select the Printer Model and the Ink type from the dropdown menus. Then click Next.

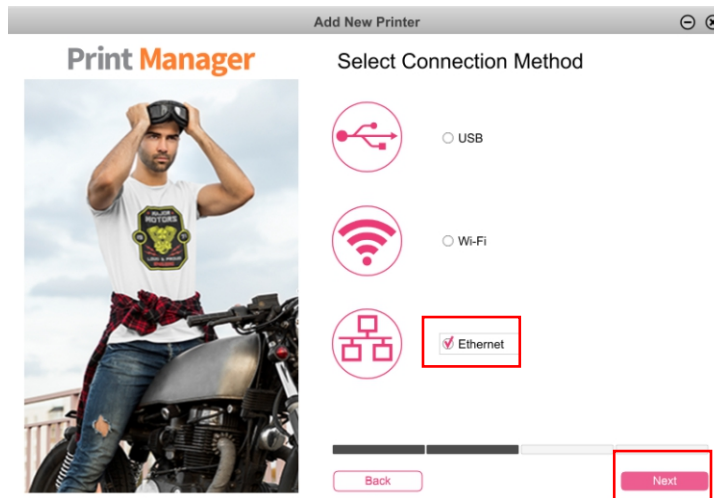


# Sawgrass Printer Installation Guide

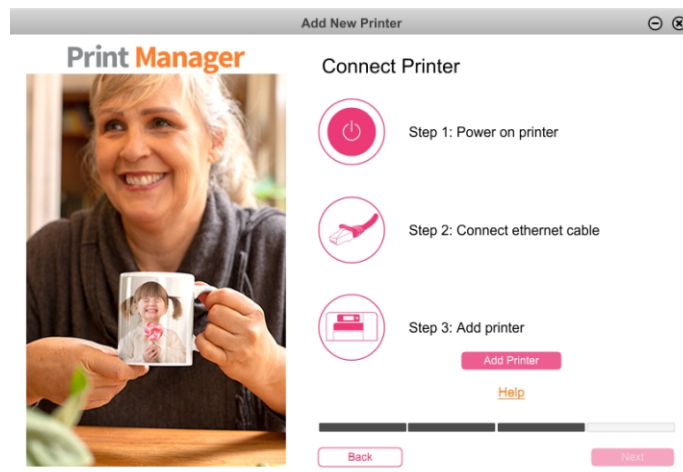
16. Click Next to proceed.



17. Select Ethernet for the method of connection then click Next.

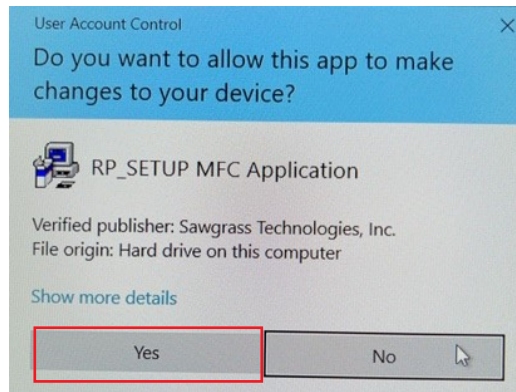


18. If the Ethernet cable is not already connected to both the router and the printer, connect it at this time. Click Add Printer.

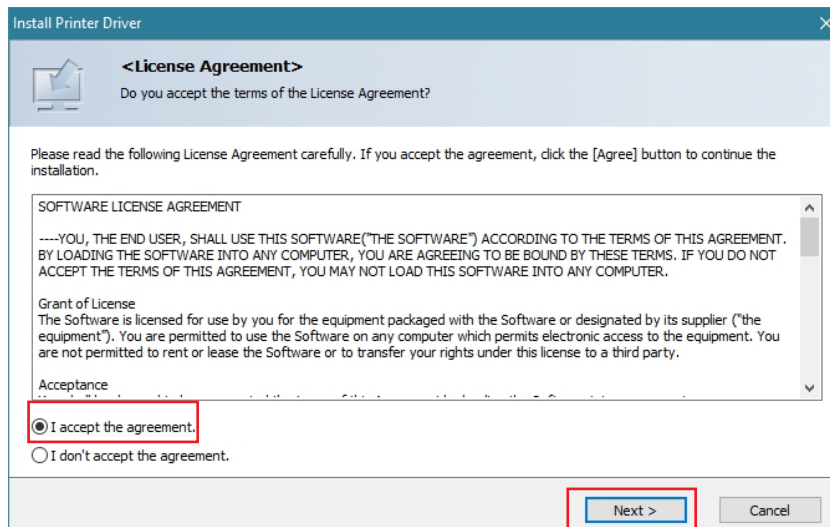


# Sawgrass Printer Installation Guide

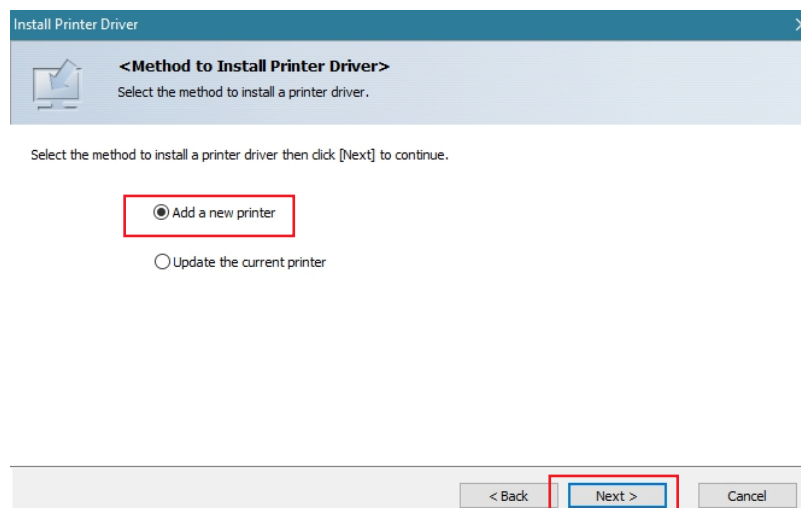
19. Click Yes to allow changes.



20. For the license agreement select "I accept the agreement" then click Next.



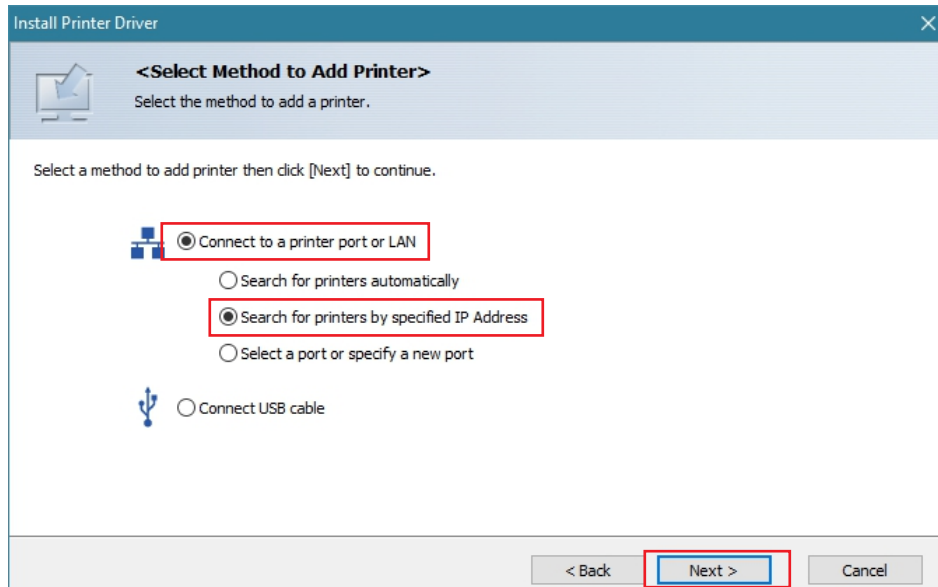
21. Select Add a new printer, click Next.



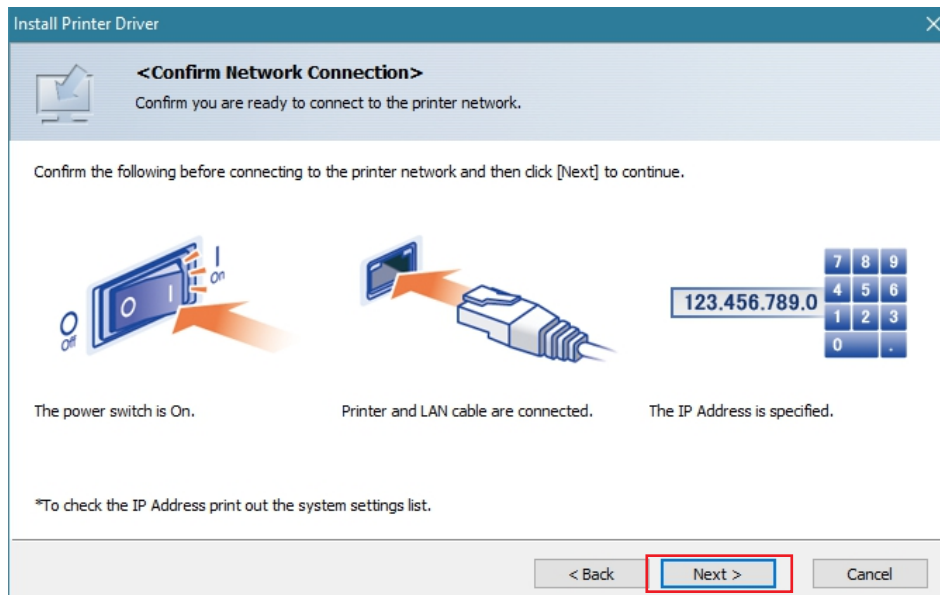


# Sawgrass Printer Installation Guide

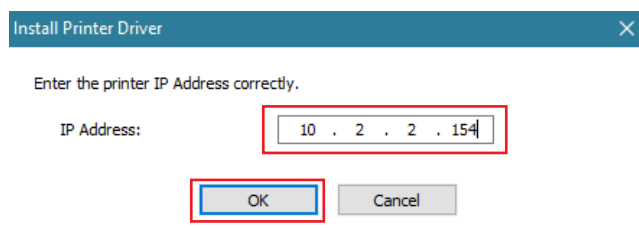
22. Select “Connect to a printer port or LAN”; select “Search for printers by specified IP Address”, click Next.



23. Click Next.

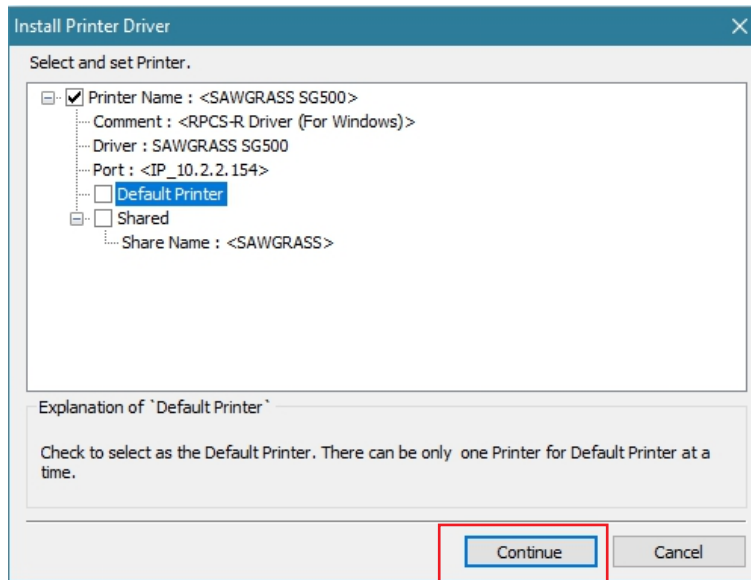


24. Enter the IP address you found on the printer in step 2. Click OK.

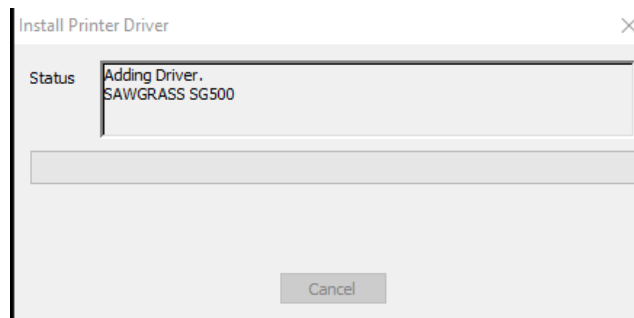


# Sawgrass Printer Installation Guide

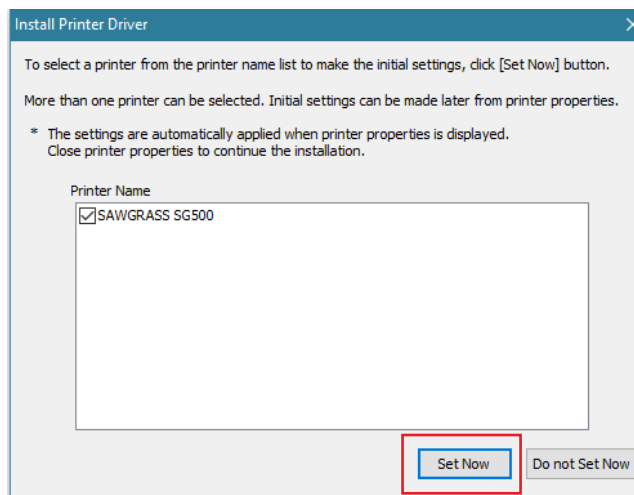
25. Uncheck the option for Default Printer then click Continue.



26. The installation process will run.

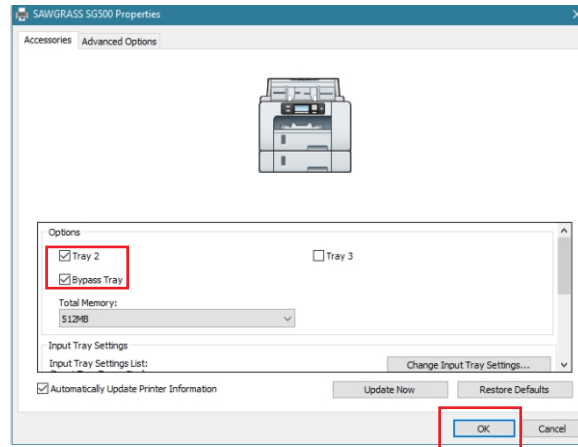


27. Verify that the correct printer was installed, click Set Now

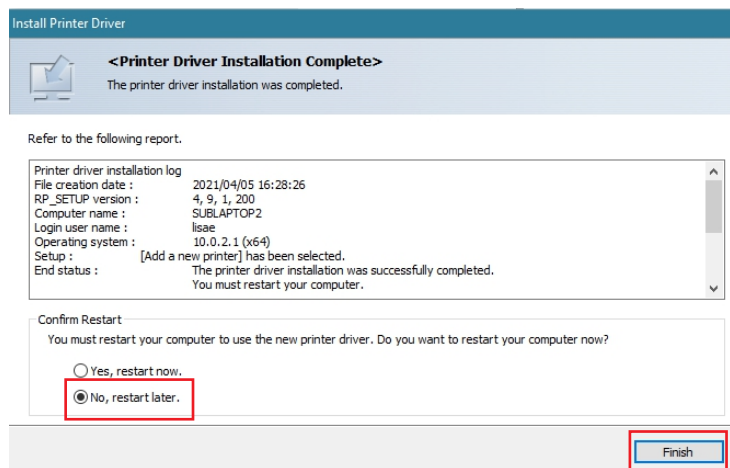


# Sawgrass Printer Installation Guide

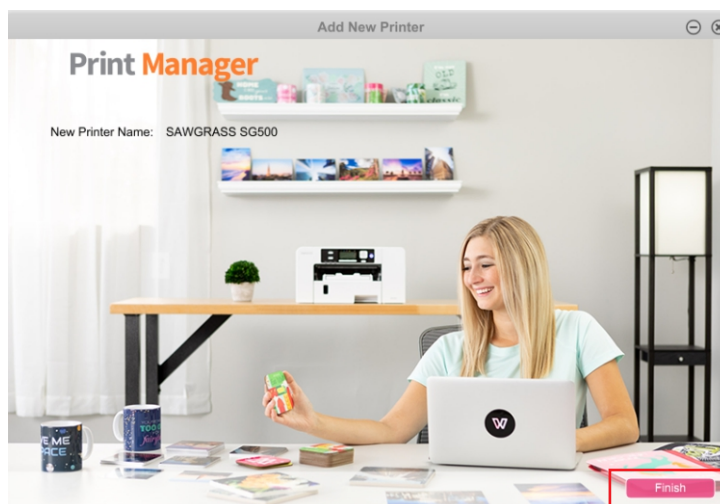
28. If any additional paper trays are connected to the printer check the box for the corresponding tray. Click OK



29. Select "No, restart" later then click Finish.

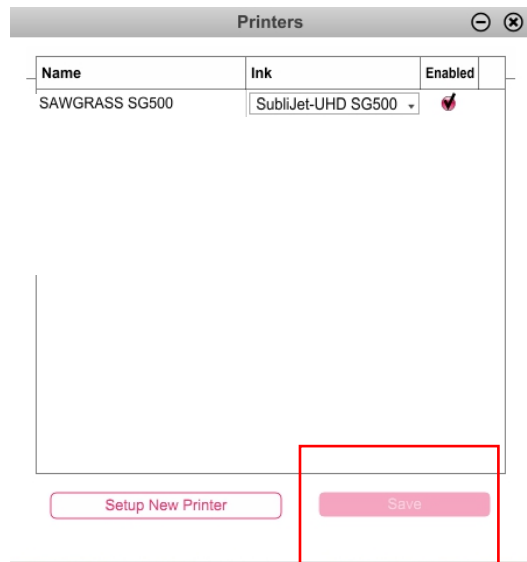


30. Click Finish.

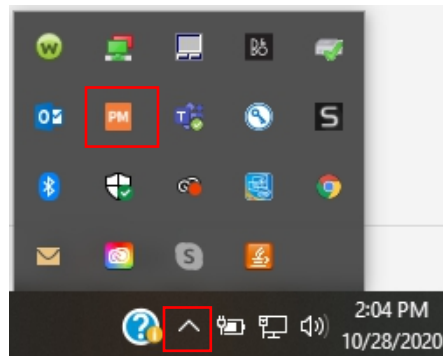


# Sawgrass Printer Installation Guide

31. When the next screen appears select the type of ink that will be used from the dropdown. If unsure, pull one of the cartridges from the printer and check the label on the front. Click Save.



32. The Print Manager will automatically start up. When running, the Print Manager icon will appear in the system tray.



33. Installation is now complete. Be sure to check the color management settings in the design software.

Go to: <https://tinyurl.com/y2nm25b7> to find the settings for CorelDraw, Photoshop and Illustrator.

Username: jdscust Password: jdscust