

SubliJet® R

Ricoh SG7100DN or SG3110DN



PowerDriver V4 **INSTALLATION GUIDE** Windows 7, 8 & 10

⚠ CAUTION

DO NOT INSTALL THE RICOH (OEM) INKS THAT WERE PROVIDED WITH THE PRINTER.

DO NOT POWER ON THE PRINTER BEFORE INSTALLING SAWGRASS SUBLIJET-R INK CARTRIDGES.

DURING DOWNTIME, IT IS **HIGHLY RECOMMENDED** TO LEAVE THE PRINTER POWERED ON TO ALLOW THE RICOH AUTOMATIC MAINTENANCE UTILITIES TO KEEP THE PRINT HEAD NOZZLES CLEAR

FOR XP AND VISTA USERS, PLEASE CONTACT JDS TECH SUPPORT - 855.SUB.INKS (782.4657)

Ricoh SG7100DN & SG3110DN - Installation Guide

PowerDriver V4 Download & Installation

The following instructions explain how to download, install and register the SubliJet-R SG7100DN or SG3110DN PowerDriver V4 on a computer running Windows 7. These instructions feature Google Chrome. *Your experience may differ based on the operating system and internet browser being used.*

- 1) Go to <http://www.jdsindustries.com/dropbox> (no login needed). Open the Sublimation Information folder (Fig 1).

Fig 1

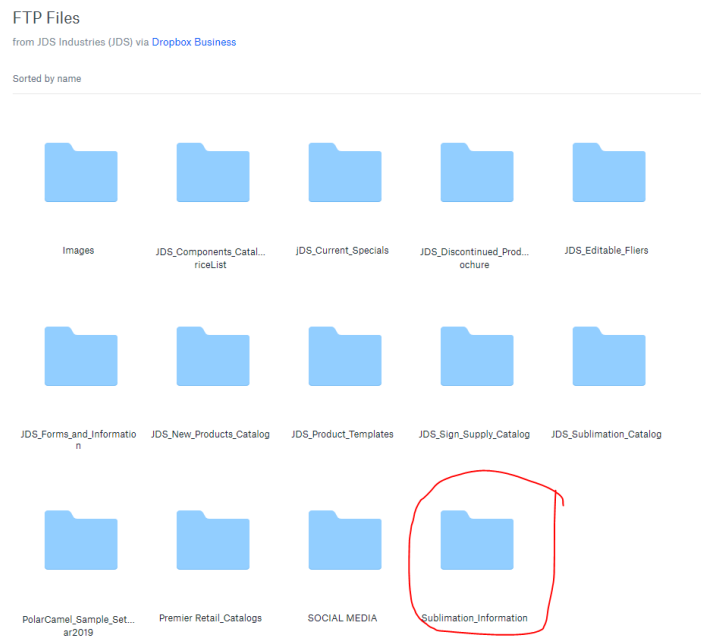
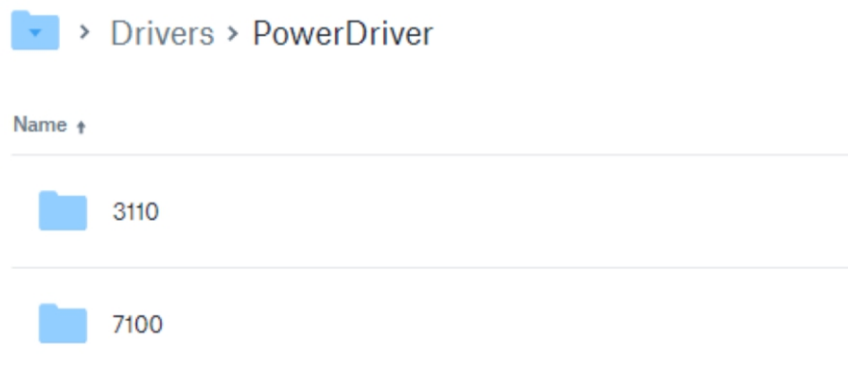
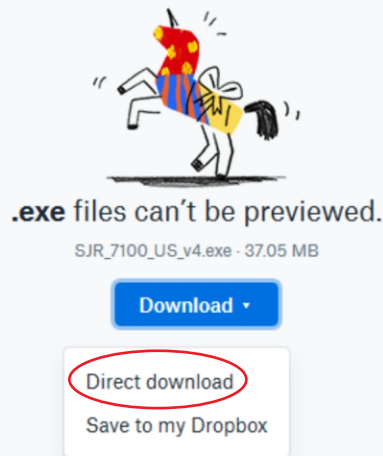


Fig 2



- 3) Click on the file and download (Fig 3).

Fig 3



- 4) After the download is complete, click on the file and open it (Fig 4). Click Yes on the User Account Control window (Fig 5). This allows the program to be installed on your computer.

Fig 4

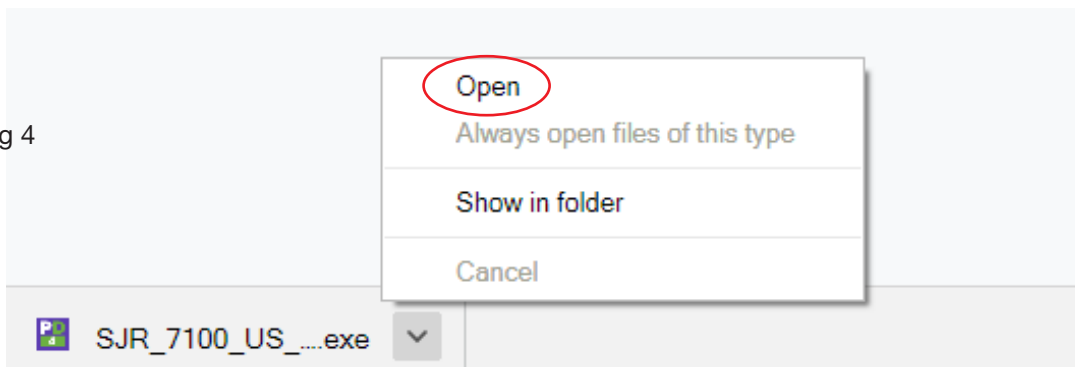
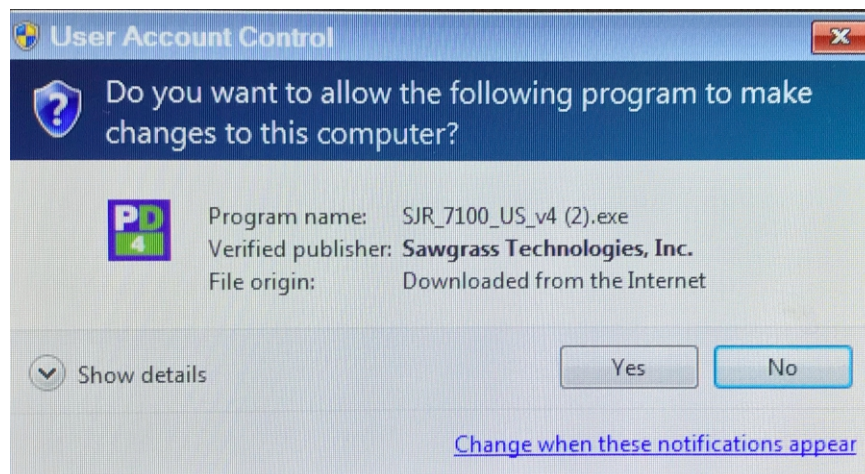
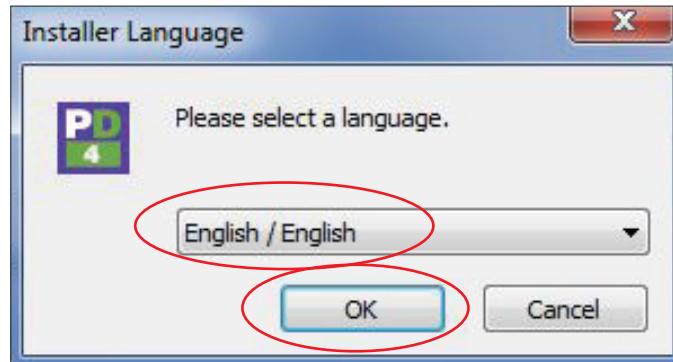


Fig 5



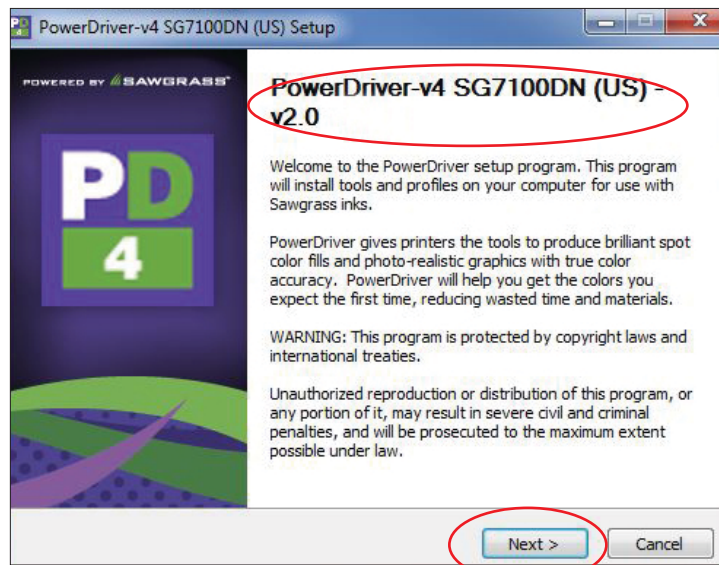
- 5) Select the appropriate language and click **OK** to continue (Fig 6).

Fig 6



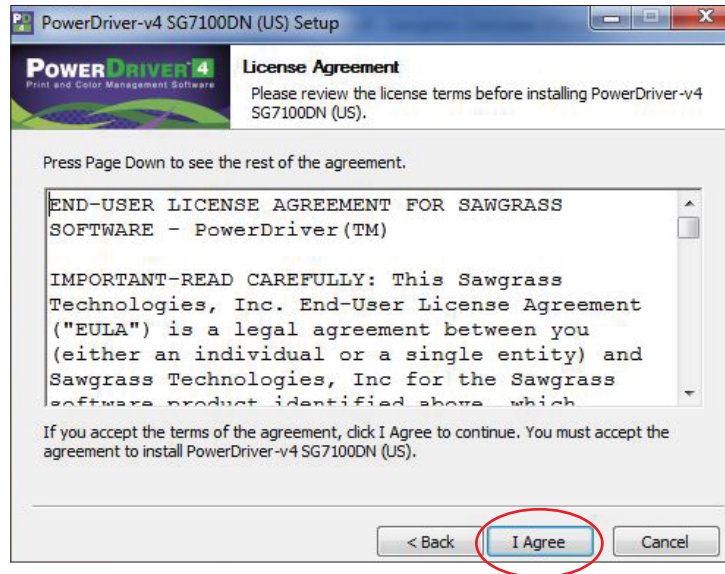
- 6) Verify that the PowerDriver is for the correct printer. If so, click **Next** (Fig 7).

Fig 7



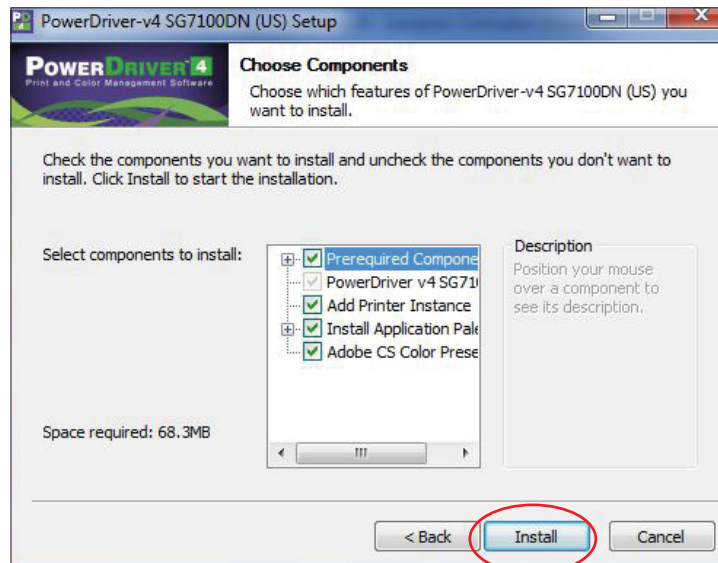
- 7) If you agree with the terms of the License Agreement, click **I Agree** (Fig 8)

Fig 8



- 8) Click **Install** to allow the PowerDriver to be installed into the correct destination folder (Fig 9).

Fig 9



- 9) If the appropriate Ricoh OEM printer driver is not currently installed, it will begin to download. The following status screen will be displayed during this process (Fig 10).

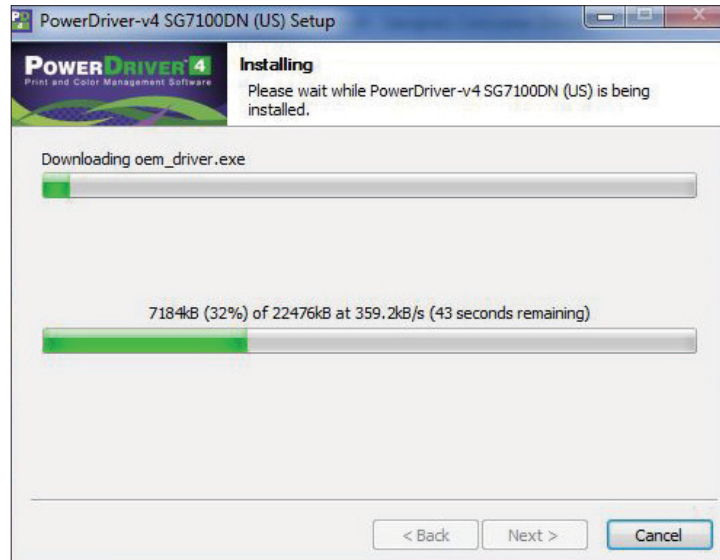


Fig 10

Note: If the appropriate OEM printer driver is already installed and what is displayed in Fig 10 does not appear, skip to step 20.

- 10) Once the download has completed, the Ricoh OEM driver will be installed. You will to accept the Software License Agreement for installation to continue. If you agree with the terms select **I Accept the agreement** and click **Next** (Fig 11).

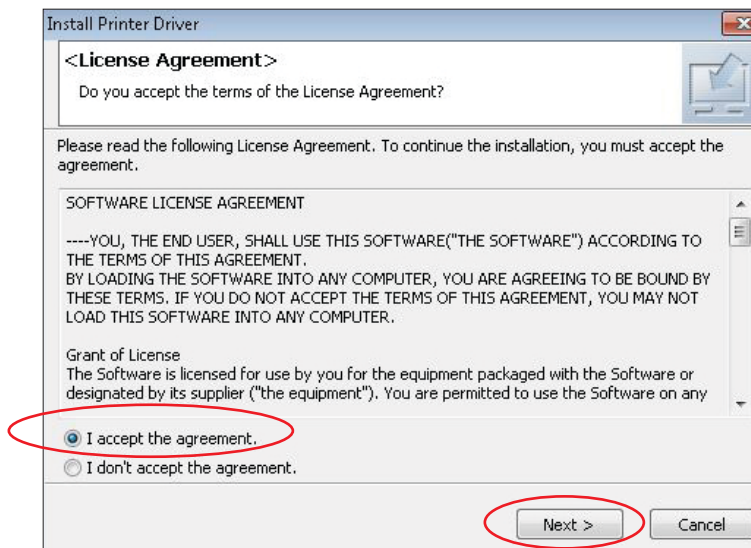
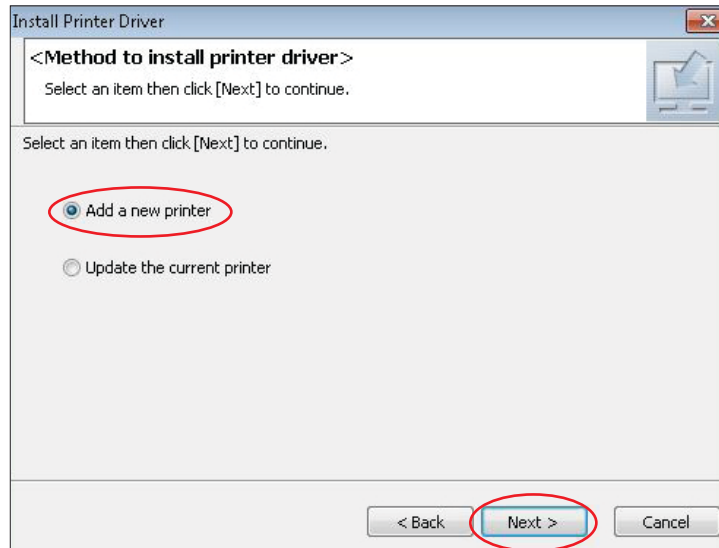


Fig 11

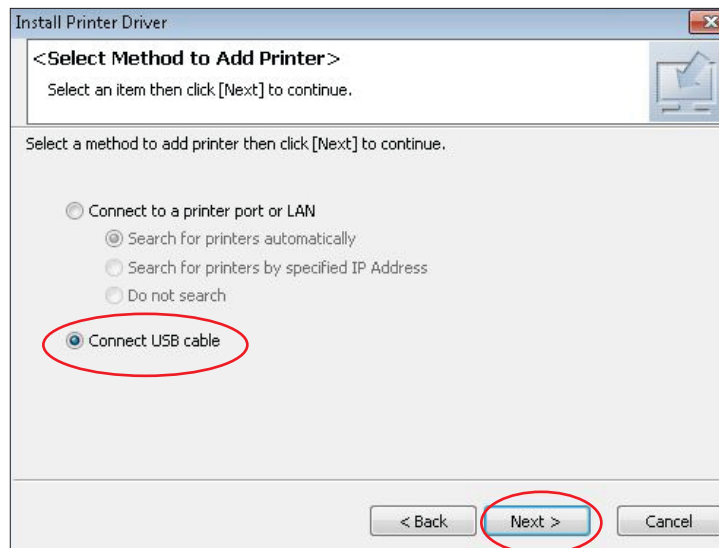
- 11) Select Add a new printer and click Next (Fig 12)

Fig 12



- 12) Select how the printer is connected to your computer and click **Next** (Fig 13). For this example we will select **Connect USB cable**.

Fig 13



- 13) The following screen will appear asking you to select your printer (Fig 14). Highlight **Ricoh AficioSG7100DN RPCS-R** and click **Next**.

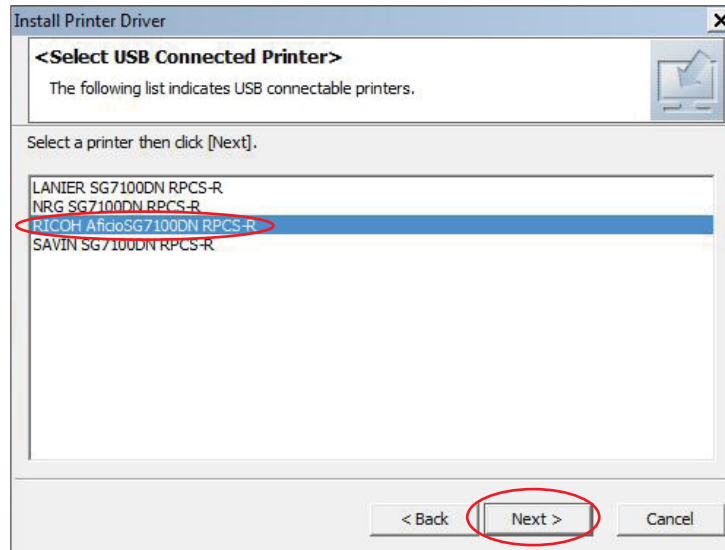


Fig 14

- 14) Ensure your printer is powered OFF or the USB cable is disconnected and click Next to continue (Fig 15).

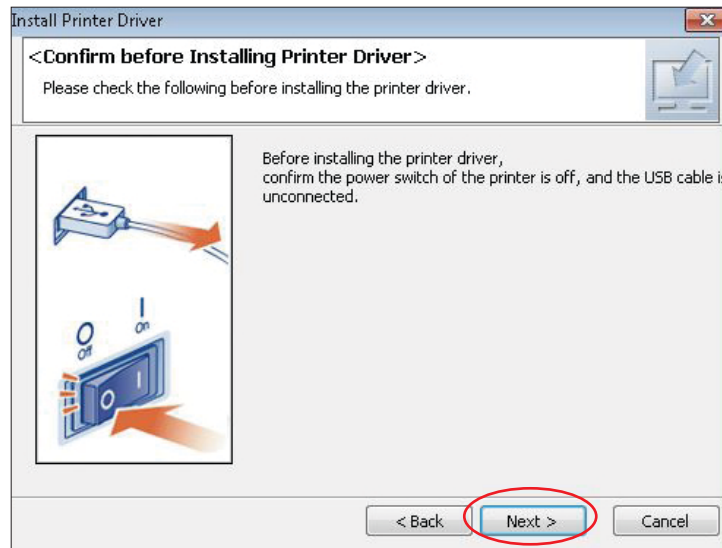
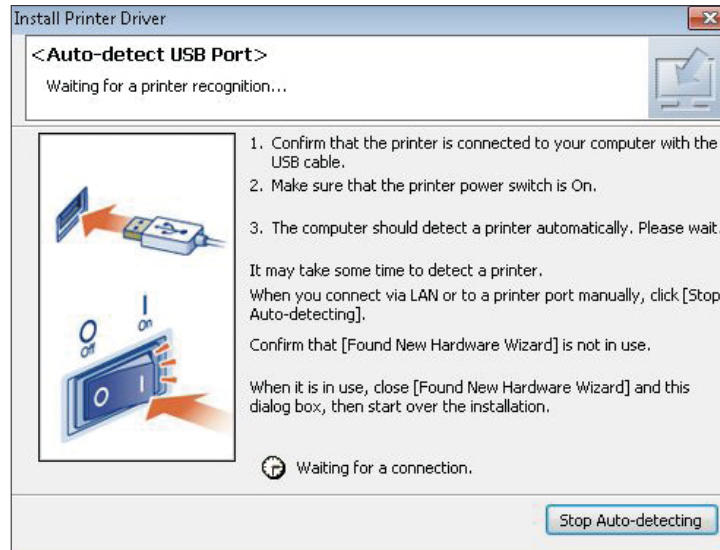


Fig 15

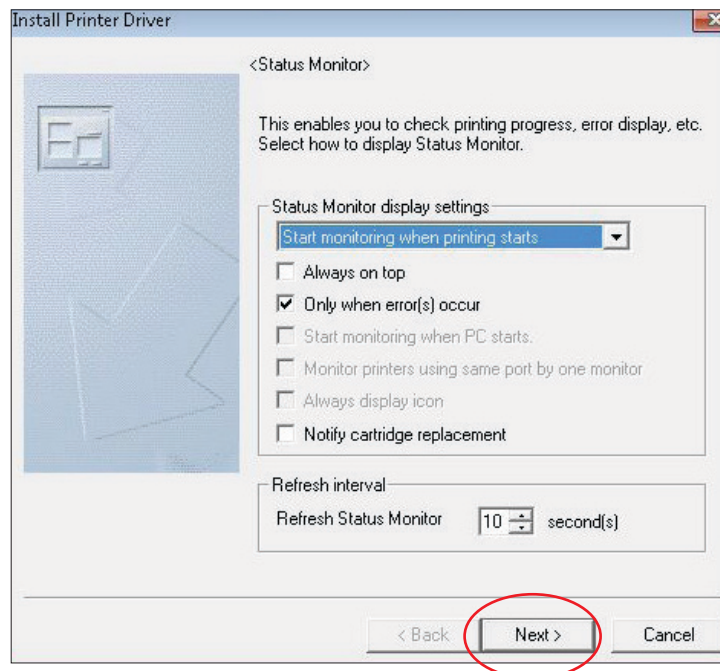
- 15) Once the files are finished copying, power ON the printer and connect the USB cable. The computer will auto-detecting the port (Fig 16).

Fig 16



- 16) In the following screen you are asked to customize the Status Monitor (Fig 17). Adjust the settings according to your preferences and click **Next** to continue.

Fig 17



17) Click **Set Now** to continue (Fig 18).

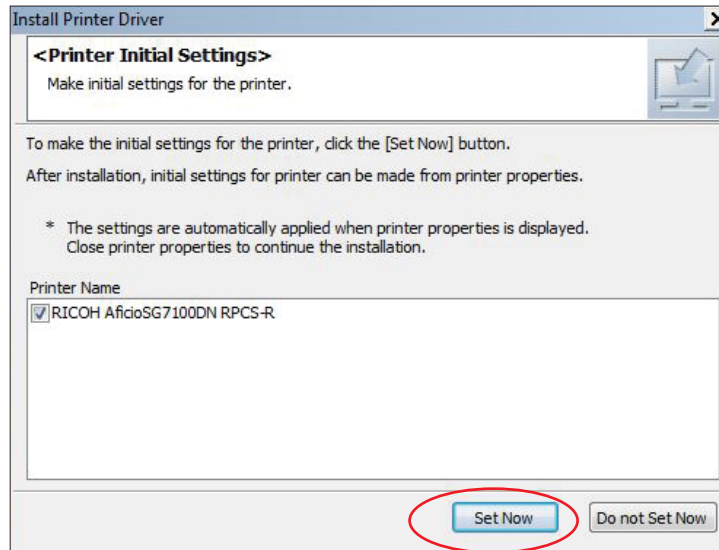


Fig 18

18) Click **OK** to continue (Fig 19).

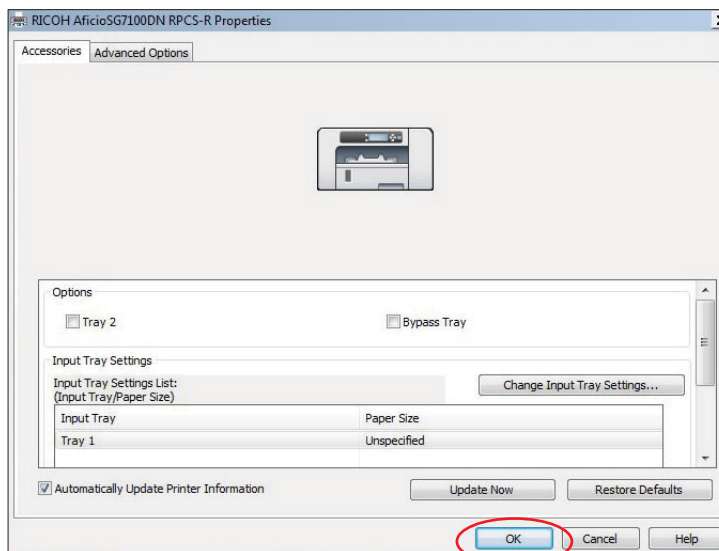
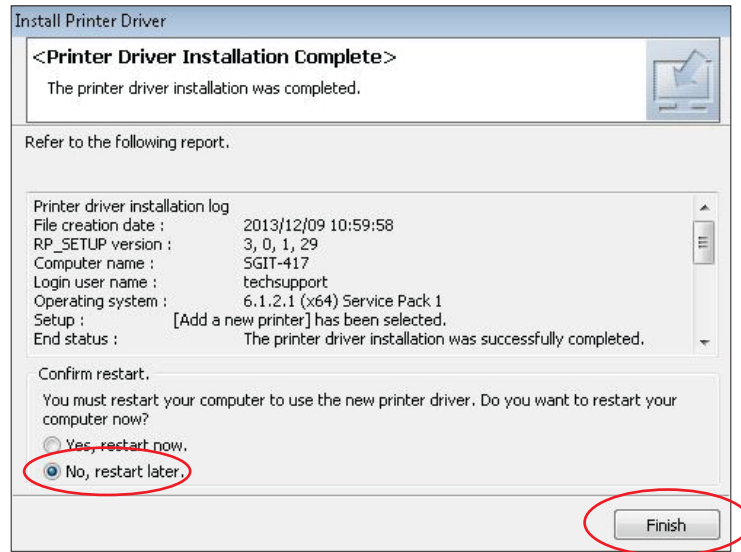


Fig 19

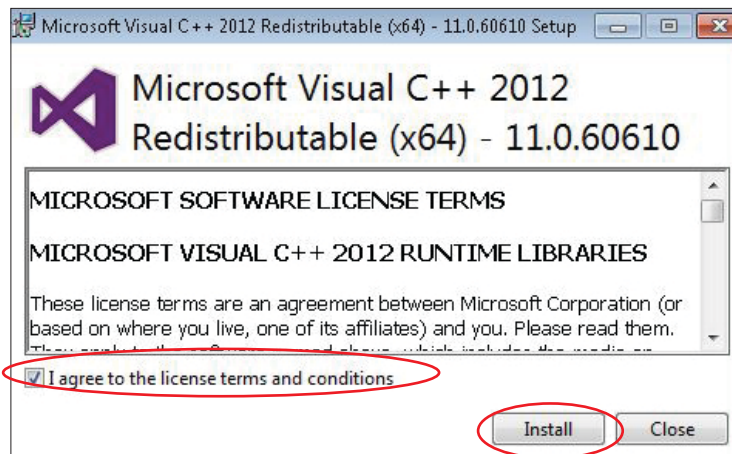
- 19) Select **No, restart later**. Click **Finish** to continue PowerDriver installation (Fig 20).

Fig 20



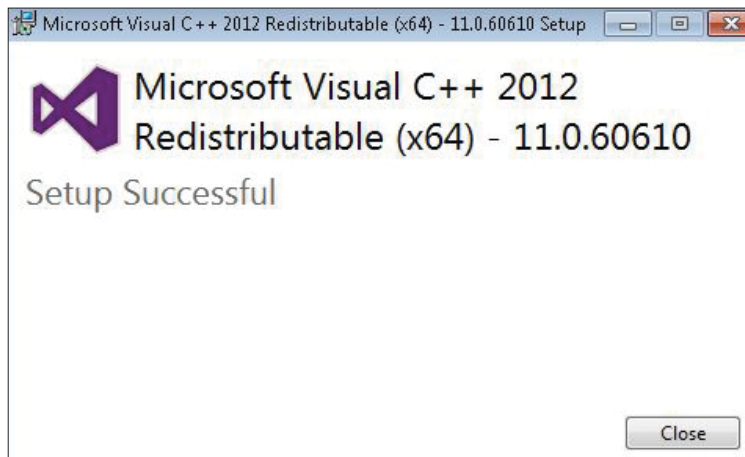
- 20) The following screen may or may not appear. If it does, you will need to accept the software license terms for the installation to continue. If you agree with the terms, select **I agree to the license terms and conditions** and click **Install**. If it does not appear, continue to step #22 (Fig 21).

Fig 21



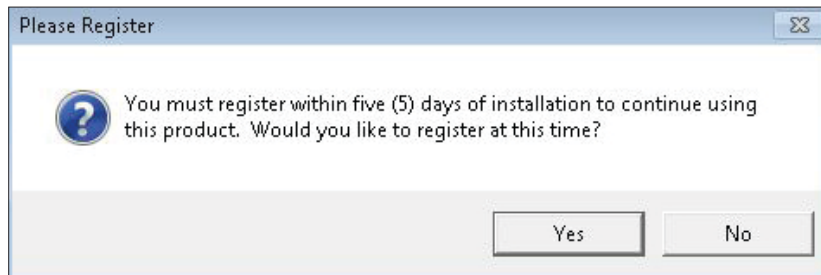
- 21) Once this portion of the installation is complete, the following screen will appear. Click **Close** to continue (Fig 22)

Fig 22



- 22) Click **Yes** when prompted to **Register the PowerDriver**. A separate Registration window will appear (Fig 23).

Fig 23



- 23) Take note of the **Product ID** number, it will be needed to register your software. Click the **Obtain Registration Code** button (Fig 24)

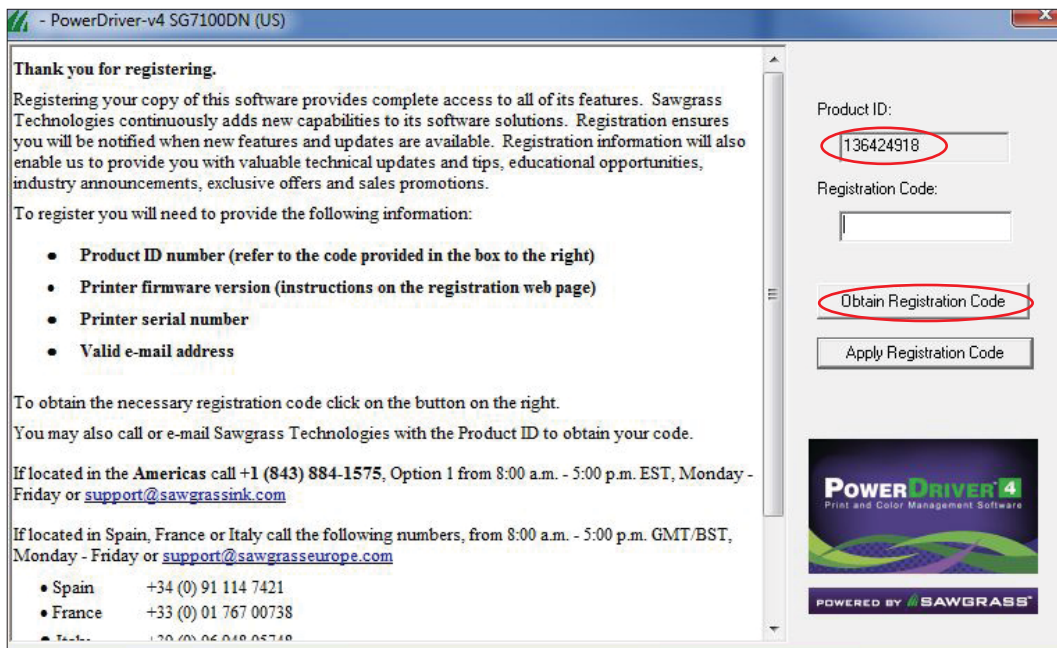


Fig 24

- 24) Once the Sawgrass web page opens, you will need to create a log in. Enter your email address and create a password then click **Log In or Sign Up** (Fig 25).

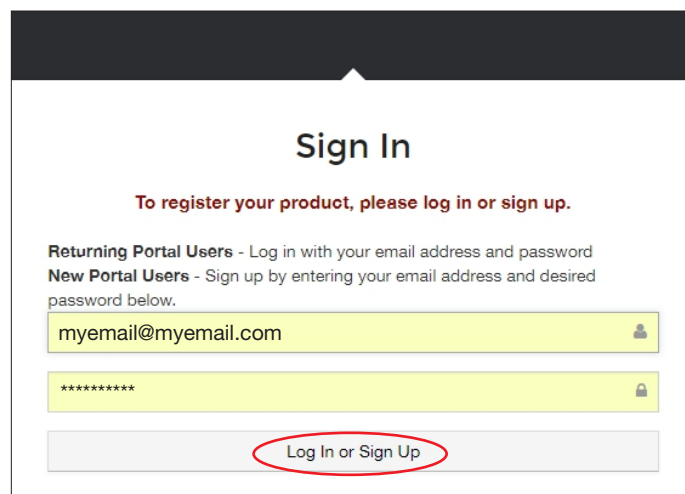


Fig 25



